

# Technique Syllabus

1. Major scale, full range:



start on the root, play as high as you can, then down to as low as you can, then return to the root

6 2. Ascending 3rds:



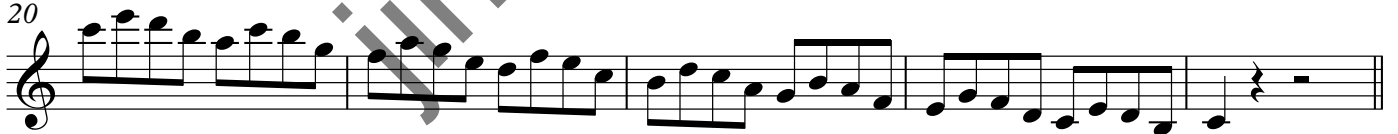
11 3. Descending 3rds:



16 4. 3rds Up/Down:



20



25 5. 3rds Down/Up:



29



## 33 6. Diatonic Modes:



37



41



44



## 48 7. Diatonic Triads:



51



Jimpiela.com